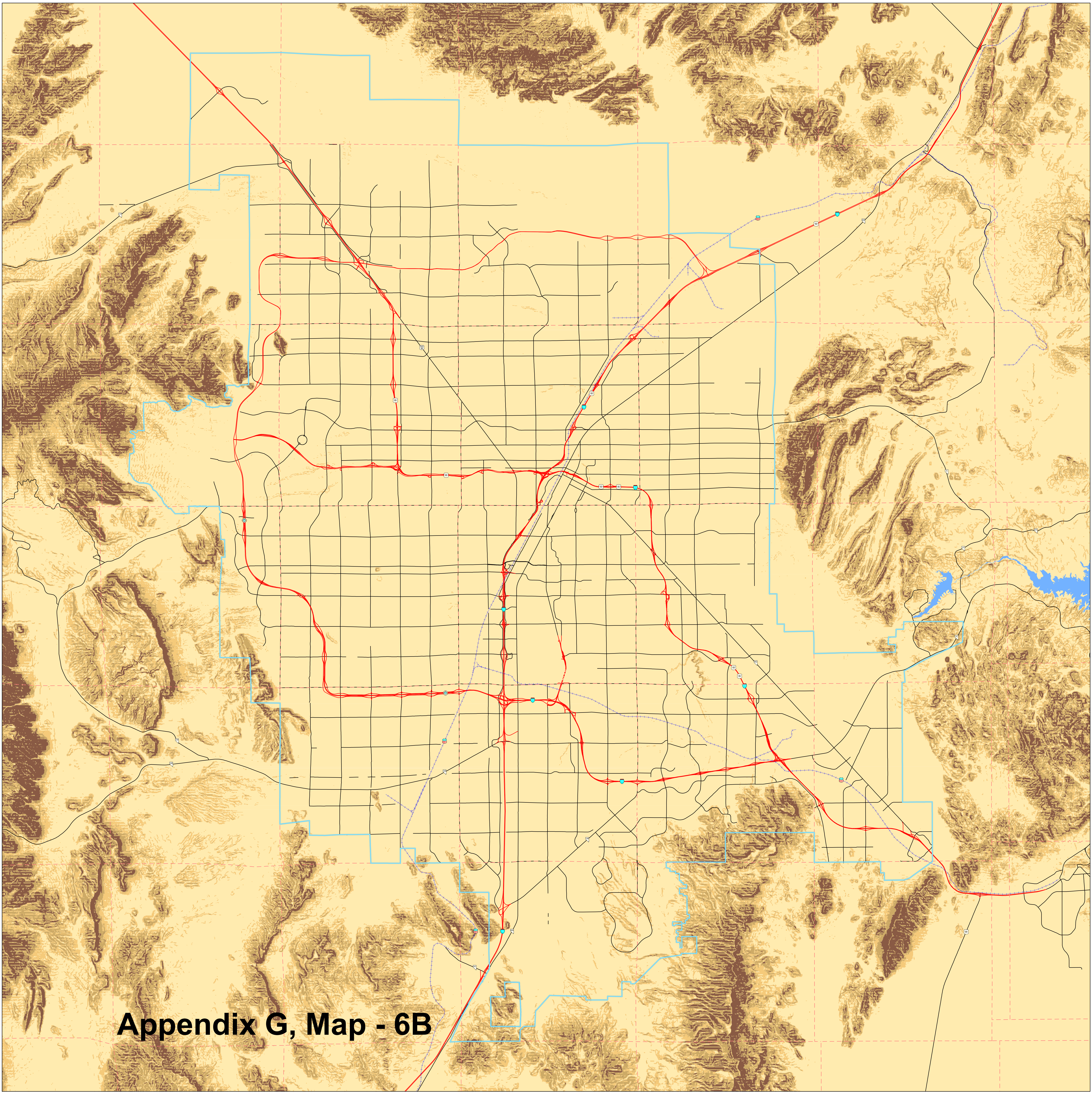


Comprehensive Planning

2006 Slope - Las Vegas Valley

Slope Topology 2006

-  slope less than 12%
-  slope 12% to 25%
-  slope 25% to 50%
-  slope 50% and greater
-  BLM Disposal Boundary



Effective 5/21/2007
(Ord.3518 § 19 (part), 5/2007)

0 0.5 1 2 3 4 Miles

Map Created On: March 2, 2007

*This information is for display purposes only.
No liability is assumed as to the accuracy of the data delineated hereon.*

Appendix G, Map - 6B

